



URBANDALE, IOWA

BENTLEY RIDGE - Villas

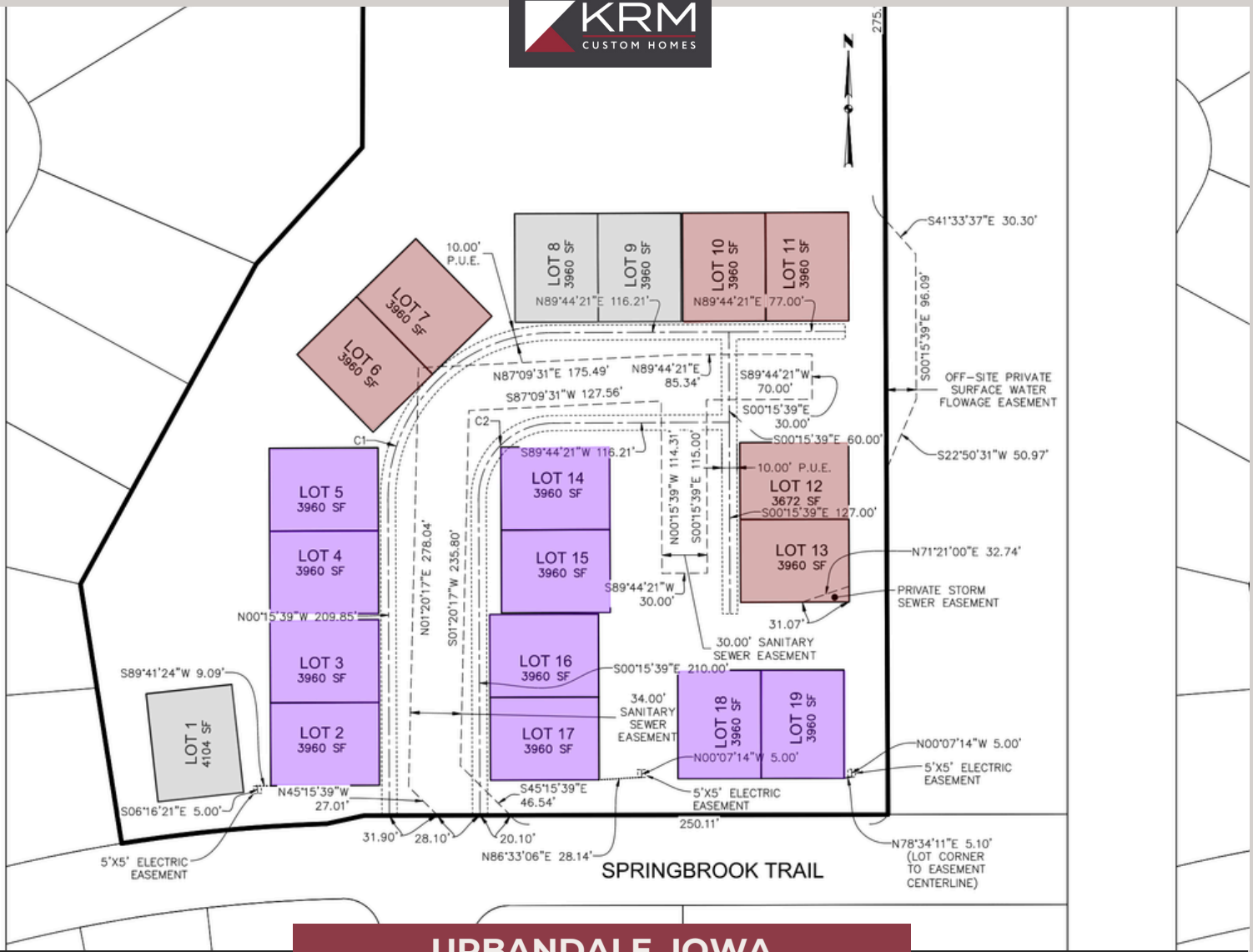
PLAT 1

Lot #	Address	Sq. Ft.	GOR/GOL	Price	Status	Configuration
1	17203 Springbrook Trl	3,604	GOR		SOLD	Walkout/Backs to trees
2	5300 172nd St	3,468	GOL	Call for Pricing	Available	Daylight
3	5302 172nd St	3,468	GOR	Call for Pricing	Available	Daylight/Backs to trees
4	5314 172nd St	3,468	GOL	Call for Pricing	Spec-1667SF Ranch	Daylight/Backs to trees
5	5316 172nd St	3,468	GOR	Call for Pricing	Spec-1667SF Ranch	Daylight/Backs to trees
6	5320 172nd St	3,468	GOL	Call for Pricing	Available	Walkout/Backs to trees

CONTACT US FOR MORE INFO.

515-243-1191

sales@krmdev.com



URBANDALE, IOWA

BENTLEY RIDGE - Villas

PLAT 1

Lot #	Address	Sq. Ft.	GOR/GOL	Price	Status	Configuration
7	5322 172nd St	3,468	GOR	Call for Pricing	Available	Walkout/Backs to trees
8	5330 172nd St	3,468			SOLD	Walkout/Backs to pond
9	5332 172nd St	3,468			SOLD	Walkout/Backs to pond
10	5338 172nd St	3,468	GOL	Call for Pricing	Available	Walkout/Backs to pond
11	5340 172nd St	3,468	GOR	Call for Pricing	Available	Walkout/Backs to pond
12	5335 172nd Ct	3,468	GOL	Call for Pricing	Available	Walkout

CONTACT US FOR MORE INFO.

515-243-1191

sales@krmdev.com



URBANDALE, IOWA

BENTLEY RIDGE - Villas

PLAT 1

Lot #	Address	Sq. Ft.	GOR/GOL	Price	Status	Configuration
13	5333 172nd Ct	3,468	GOR	Call for Pricing	Available	Walkout
14	5317 172nd St	3,468	GOL	Call for Pricing	Available	Daylight
15	5315 172nd St	3,468	GOR	Call for Pricing	Available	Daylight
16	5303 172nd St	3,468	GOL	Call for Pricing	Available	Daylight
17	5301 172nd St	3,468	GOR	Call for Pricing	Available	Daylight
18	17167 Springbrook Trl	3,468	GOL	Call for Pricing	Available	Daylight
19	17165 Springbrook Trl	3,468	GOR	Call for Pricing	Available	Daylight

CONTACT US FOR MORE INFO.

515-243-1191

sales@krmdev.com